

The Resident

Billericay District Residents' Association



"Help us to help you"



May 2024



**Billericay Needs You! Check out
our BDRA Vacant Roles**

PAGE 2

**BT's Digital Voice –
An Update**

PAGE 4

**Happy Birthday N.Shelley –
100 Years**

PAGE 5

**Do You Regret Your Choice of Legal
Power of Attorney?**

PAGE 7

Your subscription for membership costs £3, which includes 10 editions of The Resident.

Visit the BDRA Website at: www.bdra.org

Billericay Needs You!

BDRA VACANT ROLES

Chair Good Chairs are –

Assertive, Decisive, Good Listeners, Adaptable, Diplomatic, Impartial Attentive and Concise.

Do you think you have these skills? Do you care about the future of Billericay? Have you some time to spare? You sound just like the type of person we are looking for. BDRA now has a vacancy for a Chair.

If you are interested, please contact resident@bdra.org

Road Reps

We are desperately in need of new volunteers to help us distribute and manage our magazine. Can you spare just a few hours a month to help us deliver our magazine to your street?

A Road Representative usually covers the same roads once a month.

Balmoral Close, James Square / Brookside / Brookside Close and Meadow Rise

Contact Jan Weir jimandjanweir@gmail.com

Ricketts Drive / Brightside (part) and Brightside Close

Contact Gordon gordon2908@me.com

Road Rep for Leaway and Longrise (GB09)

Contact Keith Bailey keithbailey1951@outlook.com



Area Membership Secretary for Great Burstead & South Green AND Queens Park

Membership Secretaries look after their particular area. The role will normally take a few hours a month and would suit anyone looking to give something back to the community. Use of email would be an advantage. Interested?

Contact resident@bdra.org



REMINDER • REMINDER • REMINDER

We would like to remind our members that your annual subs of £3 are now due. Your road rep will be knocking on your door to collect it, if they haven't done so already. If you have elected to pay by bank transfer please make your payment in this manner as soon as possible. If you don't already, and would prefer to pay by bank transfer please email resident@bdra.org for the bank details you will require.

We can now also offer an e-version of The Resident. If you opt to receive the e-version you will be required to pay your subs by bank transfer. Please email resident@bdra.org, if you would prefer to receive The Resident in this format.

BDRA NEWS



LOCAL PLAN UPDATE

You may recall that there was an Issues and Options consultation last summer which was the first step towards the new Local Plan. Basildon council has now published the report on that consultation.

We are pleased to see that the majority of people that took part want to see the Green Belt protected, and for any new development to be prioritised for brownfield urban expansion. They also saw the need for development to be focused close to existing transport links and that improvements to infrastructure (schools and health specifically) are essential to meet population growth.

All very sensible and appropriate responses but only time will tell whether the council takes these comments on board in the new Local Plan. In 2016 our comments were ignored, and the council ploughed on with its own ill-conceived and somewhat naïve agenda. Only to see that plan withdrawn as being inappropriate.

We cannot allow that to happen again. We all need to make our views known, steer the new plan down the right path, and keep the council honest. Further consultations later this year will give us the opportunity to do so.

More information on the recent consultation can be found here. <https://www.billericayactiongroup.org.uk/io-report.html>

Save the date You're Invited! BDRA AGM

**We would like to invite all our members to our AGM on
Wednesday 22nd May 2024
at Emmanuel Church Laindon Road, Billericay at 19.30**

The speaker will be Phil Norton who is the local coordinator of Street, School and Rail Pastors. The group is made up of volunteers from the local Christian Churches who seek to go out into the community to Help, Listen and Care. They have been operating in Billericay for over 10 years and now use the community hub in the High Street as a safe warm place for the community to come to for assistance at any time. This is a chance for you to listen to Phil about the work he and the team are doing in the Town. After the AGM refreshments will be served. Will be good to see you all there.

If members want to put forward any motions, or nominations for Officers or the Auditor, you are required to give seven days' notice in writing, in advance of the AGM. Any motions or nominations should be forwarded to

resident@bdra.org

Letters to the Editor...

Dear Editor,

Further to Neil Stanley's letter in the March Resident the organisation 'Silver Voices', which represents the concerns of older people, is campaigning for a delay in the implementation of this BT's 'Digital Voice' programme until better safeguards are in place for vulnerable customers. However the Government response to an online petition has so far been disappointing. The charter that Telecom providers have signed up to is misleading, being undermined by later detail.

I, like Julian Whybra in the March Resident, have no power source where my landline is located and due to the layout of my house providing a new socket could be difficult. Although BT have offered me a backup unit in case power cuts render me unable to make emergency calls, they have not offered any help in installing power in the first place. My letter to BT was treated as a complaint but now closed so I have referred it to the Communications Ombudsman.

E.Dixon

*(Silver Voices is a web-based membership organisation for the over sixties who want a platform for campaigning on current issues;
<https://silvervoices.co.uk/>)*

Digital Voice...

...An Update


It is being reported that the date for the completion of the replacement of analogue telephone services by a new service provided over the Internet network is to be delayed. Known as Digital Voice by BT, but also applicable to other networks such as Virgin Media, Sky and TalkTalk, some sources are claiming the new completion date may be postponed until the end of 2027.

The delays have been caused by Government concerns about the problems the new arrangements would have for a number of services, such as the use of health pendants, as described in the original Resident article.

HIGH STREET

Recent editions of The Resident have explored the changes in our High Street over time.

Comparisons between different High Streets are much less valuable because of the multitude of historic factors which have led to the current situation but comparisons between specific features can still be illustrative. As an example Billericay High Street currently boasts one Bank or Building Society outlet whilst in two other local, and not entirely dissimilar settlements, we find Wickford has 3 and Rayleigh 6. History can be cruel.

 **CRYSTAL**
PRINT co UK

PRINTING
SIGNAGE
WORKWEAR

Building Plans
Colour while u-wait

Colour Copying
from 9p (based on 1000)

Van Graphics



E: sales@crystalprint.co.uk
W: www.crystalprint.co.uk
22 Western Rd, Billericay CM12 9DZ

 **01277**
650661



Coach Trip to Eastbourne



The weather didn't stop 48 Residents enjoying a break in Eastbourne.



Creative BasildON's Community Voices Relaunch

Community Voices Groups has relaunched across the 5 towns of the Basildon Borough, including in Billericay! Everyone is welcome.

Community Voices are Creative BasildON's community decision makers – a network of local people who work together, through five place-based groups, develop and commission quality arts activity which is ambitious, accessible and relevant to residents across the Basildon borough. We're looking to connect with as many people as possible - whether you're an interested local resident, an am-dram expert, are involved in a community group, host a band-night, a business owner, a local creative at any level – or anything in between – we'd love you to tell us who you are and where you're based, so we can get you involved.

These meetings are a chance to hear about upcoming opportunities at Creative BasildON; and help decide what is the future of the Voices groups. There will be FREE food, fun, and fruitful discussions. PLUS 1 attendee from each group will win a £50 gift voucher for attending!

The Billericay meetings will be taking place on: **Wednesday 1st May, 6.00-8.00pm – The Red Lion (CM12 9AJ)**

HOW DO I SIGN UP?

Please RSVP by emailing hello@creativebasildon.co.uk with your full name, email, voices group, and dietary requirements.

MUSIC MATINEE Wednesday, 17th July 2024

Following a successful Music Matinee (Embraceable Ella) with Joanna Eden at the Chantry Centre in July 2023, Billericay Lions are pleased to announce that they will be putting on another matinee again this year. With over 100 attendees we were able to raise nearly £1,000 to help local charities last year.

This year we will be presenting "Sondheim and Me" with Joanna Eden singing once again, George Double on drums and Andrés Lafone on bass. This should be another fabulous afternoon of entertainment at the Chantry Centre and all for just £15 per person.

For tickets please click on the following link www.billericaylions.com/sondheim
Alternatively you can call **0345 833 9849** or email music@billericaylions.com





Happy Birthday N. Shelley - 100 Years

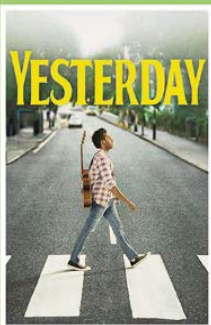
Work has just been completed on our beautiful mural to celebrate the beginning of our N.Shelley Centenary celebrations! Situated on the side of our Accessories Boutique, it depicts our founder Norah Shelley, who made the brave decision to start her own business back in 1924, keeping a watchful eye over the business 100 years later and now run by third generation family member Sarah Palmer. a public amenity and as a Nature Reserve.

Throughout this special year, our aim is to raise as much money as we can for our chosen cancer charity Breast Friends, in honour of Sarah's mother Elizabeth, who many of you will remember and who sadly lost her battle to the illness in 1990. Fundraising

starts with the launch of our new range of Centenary candles and diffusers now available to buy in-store, with all profits going to Breast Friends.

With thanks to Dave Nash at Gnasher Murals for completing such a fantastic job!

BILLERICAY COMMUNITY CINEMA



Yesterday (2019, 12A)

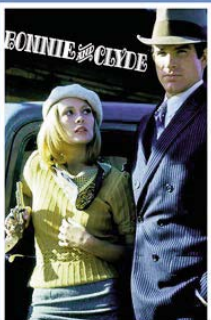
Sunday 19th May

Tickets £4.00 from Billericaycine.com

Doors open 2:30pm, film 3pm

A cuppa, home made cake,
a natter & a film
That's Sunday Matinee

SUNDAY MATINEE



Bonnie & Clyde (1967, 15)

Thursday 6th June

Tickets £5.00 from Billericaycine.com

Doors open 7pm, film 7:30pm

Wine, Billericay Brewery beers,
cocktail, mocktail, tea/coffee,
snacks

FILM THURSDAY



Cause of Billericay bar fire remains 'undetermined'

Firefighters from Basildon and Brentwood were called out to the former Reids bar and restaurant in Laindon Road, Billericay on Easter Bank Holiday weekend. Essex Fire Service has not determined the cause of the fire yet.

An enormous amount of damage was done to the site, with the roof collapsing through.

Messages of sadness and memories of the site were shared on social channels.

Do you have any fond memories of Reids?



The Essex BioBlitz is back!

From 1 April - 30 September, we're asking everyone in Essex to take photos of wildflowers through the iNaturalist app. Every photo you take contributes towards The Essex BioBlitz, a project which helps us understand how climate change is impacting our county.

Over the last two years, supporters like you have recorded a whopping 55,000 wildflowers. This year, you can help us record 40,000 more!

You don't need to be an expert to take part, just follow our three simple steps:

1. Download the iNaturalist app
2. Find a wildflower
3. Take a photo using the app



WHERE TO FIND US

The Chantry Centre - between Ravens and The Chequers

BILLERICAYCINE.COM



What an amazing park Lake Meadows is! And how lucky the people of Billericay are to have such a special facility in our town!

For the past 12 years, the Friends of Lake Meadows have helped maintain and care for the park, working in partnership with Basildon Parks & Countryside team. During this time, they have provided in excess of a 1000 hours of voluntary work each year, in caring for the gardens. They have also raised £92,000 through awards, donations and membership.

Since the beginning of February, our volunteer gardeners have been turning out every Tuesday morning to look after nearly an acre of actual flower beds, including the main gardens, the fern bed, grasses area, rhododendron walk, Garden of the Child in the Park, the cornus beds by the lake, the Hillhouse garden and the flower boxes at the main gates. In the beginning of May, over 600 bedding plants will be planted in the raised bed and boxes at the main entrance and changed again in the autumn. Last

year a major effort went into helping with the refurbishment of the Garden of the Child, providing extra planting and the rope & post fencing, complementing the new surfacing to the main paths.



Past projects, for which we have secured outside funding, include the wizard and dragon sculptures, the refurbishment of the Information Hut, a baby changing unit in the disabled

toilet, the new water fountain, the outdoor gym, bike racks, fencing at the north end of the lake, creating the Tree Trail with tree labels, picnic tables, four interpretation boards, the sensory beds, and the oak tree to commemorate the 400th anniversary of the sailing of the Mayflower.

We have already this year painted the timber fencing and weeded the footpath edges in the main garden area and we would like to restart our Saturday working parties, but this depends on volunteers who can spare the time on a Saturday.

Another small group of our volunteers are our "welcomers". During the summer they invite park visitors to look inside our small

panels of information including the history and old photos about the park over the past few years. We hope that we can find some more volunteers, so we are able to open the hut more often.

As many of you will know, we run a number of events, and this year we have pencilled in Jazz in the Park, Carols in the Park, an early morning bird walk, a bat evening, photography workshops for under 16s and our annual photography competition and exhibition, with a tree walk and history of the park session also likely.

In June, we are planning to carry out a survey of park users. We carried one out in 2018, when we had in excess of 300 respondents; this time we hope that we are able to get the views from even more park users.

When you next visit the park, we hope that you appreciate what the Friends have achieved and consider joining the Friends of Lake Meadows. Membership is a mere £5 a year per household, or £20 for 5 years. That is less than 2 pence a day! You don't have to volunteer to do anything to help us, but we do have a whole range of possible things that you could do, if you would like to help. Come on Billericay, show us you care too and join us today! Go to

www.lakemeadows.org.uk/membership

to download a membership form. Together we can make a real difference!

F. E. FARRER

FUNERAL DIRECTORS & MONUMENTAL MASONS
5th Generation Family Owned Since 1860

Private Chapels of Rest
Home Visits Arranged
Pre Paid Funeral Plans



Memorial Headstones, Additional Inscriptions and Renovations
Rolls Royce & Daimler Fleet - Horse Drawn Carriages
Green Funerals & Woodland Burials

33 High Street 246 Hutton Road
Billericay Shenfield
01277 622944 01277 216030

For Immediate Personal Attention, Day and Night
www.fcfarrer.co.uk



FLOURISHINGFLOWERS

Janet Hibberd
Floral Designer
Specialising in funeral tributes
01277 650276
FlourishingFlowers.co.uk



Blasted Memories



Slate house signs made to measure.

Personalised glass engraved gifts for all occasions.

Contact Colin who will be happy to help you



01277 655613 / 07749 710489

www.blastedmemories.com [Facebook.com/blastedmemories1](https://www.facebook.com/blastedmemories1)

Your lasting legacy.

Leaving a gift in your Will to St. Luke's Hospice – even just a small percentage of your estate – is one of the most valuable and lasting ways you can support our caring work.

St. Luke's Hospice is an innovator in the delivery of palliative and end of life care. Your lasting legacy will help us to continue to provide relevant and much needed services for local people with life limiting illnesses, and their families.

Contact our Legacies team for a free information pack today:

Call: 01268 524973
Email: legacies@stlukeshospice.co.uk
Visit: www.stlukeshospice.com/legacies

St Luke's Hospice (Basildon & District) Ltd. | A Company Limited by Guarantee No. 1812104 | Registered office: St. Luke's Hospice, Fobbing Farm, Nethermayne, Basildon SS16 5NJ | Registered Charity Number 289466

St. Luke's Hospice



Do You Regret Your Choice of Legal Power of Attorney?

The news recently highlighted yet another case of someone abusing their power as a Property and Financial Affairs attorney and stealing hundreds of thousands of pounds from a vulnerable relative.

Geraldine Skevington-Roberts has been accused of fraud by abuse of position as her stepfather, aged 94, appointed her as his attorney, and she stole from him. Geraldine manipulated her stepfather and obtained his property at a large undervalue and then kicked him out of his home, as well as using his bank accounts to pay for holidays. She even cashed in £143,000 worth of his shares and kept the money.

To top it off, when his money started to dry up, she signed a document revoking her control as an attorney!

I always advise my clients to think long and hard about who they are going to appoint as their attorneys. Usually, clients turn around and say that they trust their proposed attorneys implicitly. I always reiterate that, unfortunately, money can bring out the worst in people, and the number of cases that are coming to light where financial abuse is incurring is going up a lot, especially with the cost-of-living crisis.

Whoever you decide to appoint as your attorney, they must be over the age of 18 and not have been made bankrupt. But have



you thought about what would happen if you fell out with your attorney? Or if the attorney has a controlling partner who could be easily influenced? Or your attorney fell on hard financial times, would they have the same morals as they do now?

If you need to change your Power of Attorney or appoint additional attorneys to protect your interests, it is important to seek legal advice. This step can provide you with the necessary guidance and protection to safeguard your wishes.

Leah Woodlee

Leah.woodlee@birkettlong.co.uk
0330 818 3324

Authorised and regulated by the Solicitors
Regulation Authority No. 418404

Basildon
Chelmsford
Colchester

www.birkettlong.co.uk

it's not just about
knowing the law,
it's also about the impact
we have on businesses
and our communities

FOR EXPERT LEGAL ADVICE
PLEASE CONTACT
ENQUIRY@BIRKETTLONG.CO.UK
BIRKETTLONG.CO.UK
01268 244144



herefor**good**

The image shows a business card for Miller Decorating. At the top left is a logo consisting of a yellow diamond shape with a paintbrush inside it, and a single yellow paint drop falling from the brush. Below the logo, the company name "MILLER DECORATING" is written in large, bold, white capital letters. To the right of the company name is a bulleted list of services: "Dustless Sanding", "Spraying", "Wallpaper Hanging", "Interior & Exterior Decorating", and "Residential & Commercial". Below the company name and list, the phone number "07930 603915" is displayed in white. Underneath the phone number is the email address "dave@millerdecorating.info" in white. At the bottom, there are two social media icons: an Instagram logo and a Facebook logo, both in white, followed by the text "millerdecorating" in white lowercase letters.

Computer repairs & IT Support

Home and Business computer repairs and IT Support
Professional Microsoft Certified Technician
13 years of experience providing IT solutions

Call Andrew on **07590 057809** or **01277 523456**
andrew@a1pcservices.co.uk

Defibrillator Sessions back in 2024!



There will be two Free Defibrillator training sessions, kindly funded by the Trustees of The Reading Rooms, and are planned for 2024.

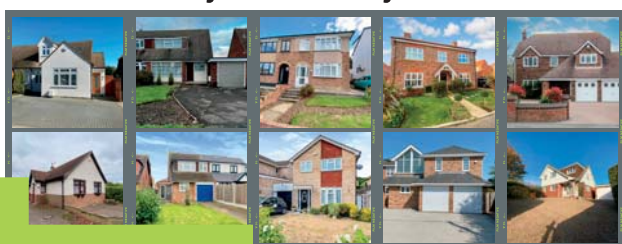
Places are limited so if you would like to book for either of these, which are held in the Reading Rooms, they would love to hear from you.

*Please contact **chairman@thereadingrooms.org***



tyler estates

'We have been selling homes in Billericay for over 13 years, could yours be next?'



SOLD



Looking to move home soon or curious how much your home is worth? Please call us on 01277 626181

Moving home • De-clutter
DIY • Small Businesses
Retiring • Bereavements
Garden Equipment • Renting

HOW MUCH DOES IT COST?
We have rooms ranging from 10 to 300sqft and prices start as little as £5 a week

DO I HAVE TO SIGN A LEASE?
No. You sign a straightforward storage licence agreement prior to moving into your unit.

- 5 minutes from the highstreet
- Unlimited access during our extensive opening hours
- Ample parking and drive-up access
- Access 365 days a year
- No long term commitments
- Your own padlock, only you hold the key
- Unique security pass - code
- 24hr CCTV cameras

MAN AND VAN AVAILABLE

- Collections & Deliveries
- 1 Tonne Hi-Ab
- 12m Cherry Picker

01277 658001 www.stableselfstorage.com
Elmshaws Farm, Tye Common Road, Billericay, CM12 9SB

SHARP'S DECORATING

Interior decorating

Paper stripping, Paper hanging, Painting

References and Portfolio Upon Request

Trading since 1988

Call for Free estimates and advice

Robert Sharp

01245 259245 or 07979 400357



Mark Hatch IOC
CARPENTER & JOINER

Architraves, Skirting, Internal, External Doors & Frames, Garden Gates, Stairs Spindles, Handrails, Built-in Cupboards, Bookcases & Shelving, Study & Bedroom Furniture, Wood Flooring, Staining & Polishing, Furniture Restoration.

01277 625908 07956 444483
www.markhatch.co.uk

A J Turner
Paving Specialist

Brick drives • Tarmacadam
Pattern imprinted concrete drives • Patios
Turving • Brick work • Fencing

For all your outside work call Jay on
01277 375901 or 07887 523455
Paving@ajturnerbuilders.co.uk
WWW.ajturnerbuilders.co.uk

S&D BANKS LTD

Plumbing & Heating

Free Quotations



- Full Central Heating
- Toilets / Sinks & Taps
- Power Flushing
- Pressurised Hot Water
- Bathroom / Shower / Tiling
- Water Heaters / Cookers / Gas Fires
- Electrical Maintenance
- Replacement Boilers
- Landlord Certificates
- Radiators / Pipes / Overflow
- Blocked Drains / Leaks
- Solar Hot Water Installations
- L.P.G., Natural Gas, Oil
- Underfloor Heating

(All work guaranteed – fully insured)

- ★ Landlord Gas Safety Certificate £65.00 + VAT
- ★ Boiler Service from £65.00 + VAT
- ★ Power Flushing from £285.00 + VAT
- ★ Free energy efficiency consultations available on request
- ★ Installer of Air Source Heat Pumps



Billericay 630236 Mobile: 07742 505011/07805 935912 email: sdbanksplumbing@gmail.com www.sdbanksplumbing.com

25 years in the trade

TLC Bathrooms

Full bathroom installations · Plumbing · Wall & Floor Tiling
Electrics · General Maintenance · Silicone sealants

Call us today for a FREE quote!

Steve Reader – based in Billericay

steveread@aol.com www.tlcbathrooms.co.uk

01277 626219 or 07765 400860

www.foxpath.co.uk

F.A.Ingram

Carpentry & Joinery

Fine interiors & bespoke joinery

Advanced City & Guilds qualified
From skirting to loft conversions
Kitchens, cabinets, bathrooms etc

07962 172658
or 01245 600428

MSM Electrical

Looking after all your electrical needs since 1986

We offer:

- Free estimates
- Professional, reliable, and friendly service
- Fault finding
- Extra lighting and power points
- Fully insured

Call Mick on

01277 650839 / 07968 641897 or

Email: msmelec@hotmail.co.uk

CARPET & UPHOLSTERY CLEANING

Ring Steve on 01277 654608 or 07836 337093



Austin Jones Group – Est. Since 1989
www.austinjonesgroup.co.uk



BILLERICAY TOWN FOOTBALL CLUB

Support Your Local Football Club

Dates for your Diary!



BDRA and Town Council Meetings

- **Billericay Town Council Meetings** Planning, **14th, 28th, May**; Health, Wellbeing and Environment **21st May**; Finance and General Purpose **30th May**
- **BDRA Meetings** No meeting this month. Contact us on resident@bdra.org



Clubs and Societies

- **Basildon and Billericay French Circle** meet at The Fold, Laindon Rd, **Friday 17th May** at 8pm 'Le monde musical selon Satie au tournant du siecle' a talk in French by Emilie Capulet, with extracts of Satie's work played on piano. All welcome visitors £5. www.basildonandbillericayfrenchcircle.com or contact 07986 293419
- **Basildon Mind** A local Charity focusing on helping people with their mental health. Working with Billericay Pastors, drop in centre on Wednesdays 2-5pm in Community Hub, High St. Billericay. Contacts: 01268 289700, john@basmind.org
- **Billericay Archaeological and Historical Society** Meet at The Fold, Laindon Road, **Monday May 13th** The London of Samuel Pepys – Richard Pusey Non-Members £2, Raffle £1, refreshments £1 per person. Contact alantaylor8@btopenworld.com
- **Billericay Art Club at The Fold Thursdays** 9.30-12.30 New members wanted to join small group of friendly, encouraging amateur painters at The Fold Refreshments and free parking available. Call Eileen on 01277 659347 for more information
- **Billericay Flower Arranging Group** meet on the **first Wednesday of each month** at 7.30pm for 8pm start in the W.I. Hall, St. Edith's Lane, Billericay. Visitors welcome at £7 each. Contact Linda Gilbey on 01277 656217 or email ljgilbey@oal.com
- **Billericay Horticultural Society** meet at the Chantry Centre from 8pm-10pm, visitors welcome £3.00. Refreshments available. **11th May** – Plant Sale; **May 20th** Summer Sizzlers, plus Q&A and A Passion for Pelargoniums – Nick Dobson 43trouble@gmail.com
- **Billericay Lions Club** meet in The Duchess Suite at The Duke's Head PH on the **second and fourth Mondays every month** 8-10pm. If you would like to make new friends, whilst helping those less fortunate than yourself, please get in touch 0345 833 9849. For more information www.billericaylions.com
- **Billericay Men's Shed** Generally fortnightly – **Mondays** – Coffee n chat, **Tuesdays** – Woodworking, **Wednesdays** – Volunteer supported sessions for those with dementia and their carers. Lake Meadows to the front of the bowls building, just beyond the bowling green. Contact billericaymensshed@gmail.com or phone 07544 752686
- **Billericay Branch of The Mother's Union** meet on **4th Wednesday each month** at 1pm for 1.30pm start in the Mayflower/Pilgrim Rooms of The Emmanuel Archer Hall 66-68 Laindon Road, Billericay CM12 9LD. We have a variety of Speakers and activities, Contact Pauline 07939102945
- **Billericay and District Parkinsons Support Group** We have **every Monday and Tuesday** at 11.30am at Studio360 our exercise classes; **every other Tuesday** Let's Sing Group meet at 2pm in Christchurch, Wickford, our Walk and Talk Group meet **every Thursday** at 11am at main entrance of Lake Meadows to walk a loop or two and tea at the end; Monthly meeting on **3rd Saturday of each month** at Emmanuel Hall at 2.30pm.
- **Billericay Model Railway Group** Exhibition **25th May** 10.00am-4.00pm at Hannakins Farm Community Centre, Rosebay Avenue CM12 0XP Adults / Unaccompanied children £5, Concessions £4.50, Under 18 £3, Under 5 Free, Family ticket £13. Contact exhibitionmanager@billericaymrg.org
- **Billericay WEA** at The Reading Rooms, Billericay High Street CM12 9AS. Wednesday evening course – 4 sessions Happy Healthy Holidays on the East Coast with Claire Parker Starts **Wednesday June 5th** 7.30 – 9.30pm Fee: £33.60 Ref: Q00013751. Enrol www.wea.org.uk or 0300 303 3464. Local contact: Billericay.branch@wea.ac
- **Carers Peer Support Group** Meet at 2pm in Education Room of Billericay Medical Centre on **last Monday of the month**. To book: Contact Jenny. Goodson@carersfirst.org.uk
- **Crafty Cow Markets Saturday May 11th** 11am-4pm – monthly Market and Artisan Craft Fair. Supporting Havens Hospices. Chantry Centre CM11 2AP
- **Gone Too Soon** Bereavement support group for Parents who have lost a Son or Daughter in any circumstances and if recent or a while ago. Meet at The Chantry Centre, Chantry Way **Monday 13th May** at 7pm – Parents are given a warm and friendly welcome in a safe environment. Contact Lyn on 07387805406 or e-mail lyn-currie@hotmail.co.uk www.gone-too-soon.online
- **Hearing Help Essex** – Hearing Aid Support Session. **Monthly** maintenance sessions for NHS hearing aid users at The Chantry Centre. To book an appointment call 01245 496347, text 07950 406173 or book online at www.hearinghelpessex.org.uk
- **Norsey Wood Society** – Spring Fayre **Sunday 12th May** 11am-4pm. Entrance free but limited car parking (CM11 1HA). Enter via Lilford Rd pedestrian entrance, head for Main Picnic area.
- **Offshoots Singing Group** meet on **1st and 3rd Wednesday of each month** at St Johns Church, Outwood Common Rd CM11 2LE from 7.45-9.45pm. No auditions. Parking on site. Contact geoffrudd47@gmail.com or phone 07763424206
- **Photofold Camera Club** meet at The Chantry Centre, Chantry Way on **Tuesdays** 8-10pm, doors open at 7.30pm. Info at www.photofold.org.uk
- **Probus Retired Men's Club** Join other retired professional and businessmen at our **monthly** lunch, usually with a Speaker. Contact Steve on 07817 694980 or stevejk88@outlook.com for more details.
- **Billericay Ladies Probus Club** If you are retired and would like to make new friends, join us for a **monthly** lunch, chat and speaker. Contact stephanie4probus@gmail.com for more details.
- **Remus Horse Sanctuary 11th May** Fashion Show at Stock Village Hall 1pm. Tickets £6 or 3 for £15; **26th May** Online Auction via Remus Facebook Page. Starts 11am; **26th May** Curry Lunch at Nirvana Indian Restaurant, Ingatstone. £20 per person. 2pm for 2.15pm start. Booking essential; **2nd June** Open Day at The Sanctuary. 1pm-4pm **8th May** Fundraising Concert Stock Village

Hall, 7pm for 7.30pm. Tickets £20 Harmony Brass performing Contact: <https://www.remussanctuary.org/events>.

- **Royal British Legion** Billericay Branch meets on **last Wednesday of the month** at 8pm in the Chantry Centre. You don't have to have served in the Forces to join or help. Contact Derek on 07757 313688, derekgprior@hotmail.com
- **South Green Memorial Hall AGM Thursday 23rd May** 8pm. Contact joanmiles419@btinternet.com
- **Stock Brook Ladies Probus Group** meets on the **3rd Wednesday of each month** to listen to a speaker and take lunch together at Crondon Park Golf Club. All are welcome. Please contact stockbrookladiesprobus@talktalk.net for more details.
- **APPLE Bridge** Friendly EBU affiliated Club meets at Hannakins Farm, Rosebay Avenue on **Wednesdays** for duplicate sessions at 9.30. Sessions cost £3. Bring own refreshments. Contact 07552 753075
- **Venturers' Bridge Club** meet on **Thursdays** 1.15pm at Hannakins Farm, Rosebay Avenue for social bridge in a friendly environment. £4.00 per session. Contact graham@forsythe.co.uk

The WI

- **Billericay WI** meet at the WI Hall, St. Edith's Lane at 2pm on the **first and third Wednesday of each month**. Contact 01277 624255.
- **Buttsbury (Billericay) WI** meet on the **2nd Tuesday of the month** at Canon Roche Hall 8pm-10pm. New members welcome. For more details contact Jan Nash on 01277 630147

- **Little Burstead WI** meet on the **second Thursday of the month** from 2pm-4pm at Little Burstead Village Hall. Contact 01268 491396

- **South Green WI** meet on the **third Thursday of the month** at South Green Memorial Hall, Southend Road. CM11 2PR. Contact 01277 652739



Fitness and Sport

- **Billericay parkrun** Every **Saturday** 8.45am at Lake Meadows, parkrun provides a free, timed 5k run, jog or walk for all standards from 4 years+ Visit www.parkrun.org.uk/billericay or visit our Facebook page.
- **Lake Meadows junior parkrun** Every **Sunday** at 8.45am at Lake Meadows, parkrun provides a free, timed 2k run, jog or walk for all standards from 4-14 years. Visit www.parkrun.org.uk/lake-meadows-juniors/ or visit our Facebook page: Lake Meadows junior parkrun
- **Billericay Town Walking Football** We train at Billericay Town FC. Men 50+ on **Mondays** 8pm-9.30pm and **Thursdays** 10am-12pm (£6 per session) **Mondays** 7pm-8pm for Ladies 40+ (£5 per session). E-mail Bill at btfcwf@gmail.com
- **Outwood Common Tenants and Residents** – Seated Yoga **Friday** 11.15-11.45am at St John's Church. £1 a session. Open to everyone of all ages and abilities

To advertise your event here, please email resident@bdra.org

Deadline for the next issue is 10th May for events taking place between 10th June and 9th July

Computer Problems?

Don't struggle to carry it up to the shop or put up with expensive call out charges.

Call Gary Mander,
Computer Technician
on 01277 636358
for a no obligation chat

Gary@PCTechnician.co.uk

No Call Out Charge!



THE
CHIROPRACTIC CENTRE
BILLERICAY • BRENTWOOD

**DO YOU HAVE
PAIN?**

Call us **TODAY** on
01277 631025



- Low back pain
- Neck pain (including Whiplash)
- Hip and knee osteoarthritis
- Shoulder pain
- "Frozen" shoulder
- Tennis elbow
- Knee pain
- Plantar Fasciitis
- Dizziness (cervicogenic)
- Migraine and headaches



 **MHI**
Building & Maintenance

HANDYMAN

HOME REPAIRS

**GENERAL BUILDING
SERVICES**

01277 562095

www.mayhomeimprovement.co.uk
info@mayhomeimprovement.co.uk



Billericay District Residents' Association COACH TRIPS



**ON THE DAY OF THE TRIP ONLY
THE EMERGENCY CONTACT
NUMBER IS 07518 122647**

Please note that all payments should be made as soon as possible and sent to the person named on the trip advertisement. Cheques should be made payable to BDRA and the trip title shown on the back of the cheque.
Departure points for all trips:

QPR – Queens Park Roundabout (for holiday trip only), GG – Gooseberry Green, bus stop at roundabout, OA – Orchard Avenue, approaching Stock Road, LR – Laindon Road, bus stop between Sun Corner and the fire station, SG – South Green, bus stop to Wickford, opposite the retirement apartments

Please note – When a trip is confirmed the fare must be paid as soon as possible.

If you are a solo traveller on a trip, we ask you to provide a contact number when booking, in case of an emergency on the trip.

MONDAY 20TH MAY 2024 – ABINGDON AND MILLETS GARDEN CENTRE

PLEASE PAY NOW

We spend the morning in the historic market town of Abingdon on Thames which claims to be the oldest town in England. There will be time to look at the market and shops or have a walk along the Thames. There are plenty of eating places. After lunch we take a short drive to Millets Garden Centre. This farm shops sells meat, fruit, vegetables and has a bakery selling bread, cakes and biscuits. All the produce is either grown on the farm or locally sourced. It also has clothes, interior decor, garden furniture, toiletries, toys, home wear and a gift shop. It also has a large selection of plants. There are two restaurants. Outside they have a maize maze, a ferris wheel and a carousel (£3 per ride). There is also an animal enclosure with goats, sheep, pigs, rabbits and rheas or you can take a stroll along their nature trail.

Cost: £21.00

Depart: GG 8.00am. OA 8.05am. LR 8.15am. SG 8.25am. Back in Billericay approximately 7.00pm.

Kathleen Fox, 72 Perry Street, Billericay, CM12 0ND. Telephone: 01277 622342

SATURDAY 29TH JUNE – SNAPE MALTING AND SOUTHWOLD

We begin our day at Snape Maltings, where we can visit a collection of stylish, independent shops & galleries. Enjoy a coffee in the eateries all housed in Victorian buildings, sited on the River Alde.

Leaving Snape Maltings, we make our way to Southwold arriving at lunchtime. Southwold is famous for its glorious sandy beach, bright beach huts and extensive greens. Uniquely, Southwold lighthouse stands in a prominent position within the town, where it towers over enclosed greens and Victorian houses. A visit to the lantern room at the top is a perfect place for stunning and far-reaching panoramic views of the coastline, tours are available at a cost of £15.50 & need to be booked in advance on the website or telephone 01502 727200. Although the town has a bustling High Street, wonderful pubs and restaurants, it has managed to retain its old-world charm, evident in the Electric Picture Palace, still a working cinema and The Common Pier.

Cost: £20.00

Depart: GG 8.00am. OA 8.05am. LR 8.10.00am. SG 8.20am. Back in Billericay approximately 6.30pm.

Please telephone to book after 9.00am on 5th May

Yvonne Cave, 11 The Vale, Stock, Ingatestone, Essex CM4 9PW. Telephone 01277 840560

TUESDAY 23RD JULY – A MORNING TOUR OF THE LAVENDER FIELDS AT CASTLE FARM IN KENT. FOLLOWED BY AN AFTERNOON VISIT TO POLHILL GARDEN CENTRE

Our guided tour at Castle Farm, in Shoreham Kent looks behind the scenes of Lavender growing and essential oil production. Our tour includes a drink and lavender shortbread. Visit The Lavender Barn to enjoy the selection of lavender products, made using essential oils produced on the farm. After, relax outside The Coffee Cart with barista-made hot drinks, cold drinks, ice creams & snacks, before we head to Polhill Garden Centre. It is impossible to list everything Polhill offers, along with everything for your garden, outdoor & indoor living, cookery, wildlife care, toys, etc. etc. Novell's Restaurant has an extensive lunch menu, from both light bites to main meals.

Cost: £34.00 Coach, Lavender Tour & Polhill Garden Centre.

Depart: GG 08.15am. OA 08.20am. LR 08.25am. SG 8.30am. Back in Billericay approximately 5.30pm.

Please telephone to book after 9.00am on Thursday 9th May

Yvonne Cave, 11 The Vale, Stock, Ingatestone, Essex CM4 9PW. Telephone 01277 840560

**If concession prices are quoted (i.e. seniors, children) these should be requested at the time of booking or the full price will apply.
In the event that you need to cancel all efforts will be made to resell your tickets, however if we are unable to resell your tickets
you are liable for payment.**

PRIVACY NOTICE We understand that you consented to BDRA holding personal details about you when you subscribed as a member of the Billericay District residents' Association and a recipient of the Resident magazine. The information which we hold is your name and address, and we may hold additional information which you have provided such as your email address and/or telephone number. We hold this data for the purpose of delivering the Resident Magazine to you and to collect and administer your subscription payments. We will hold your personal information only for as long as is necessary for these purposes. Personal data is held securely and will not be shared with any third parties. You have the right to request to see what information we hold about you. You have the right to instruct us to delete your personal information from our records at any time. This would result in the termination of your membership of the BDRA.